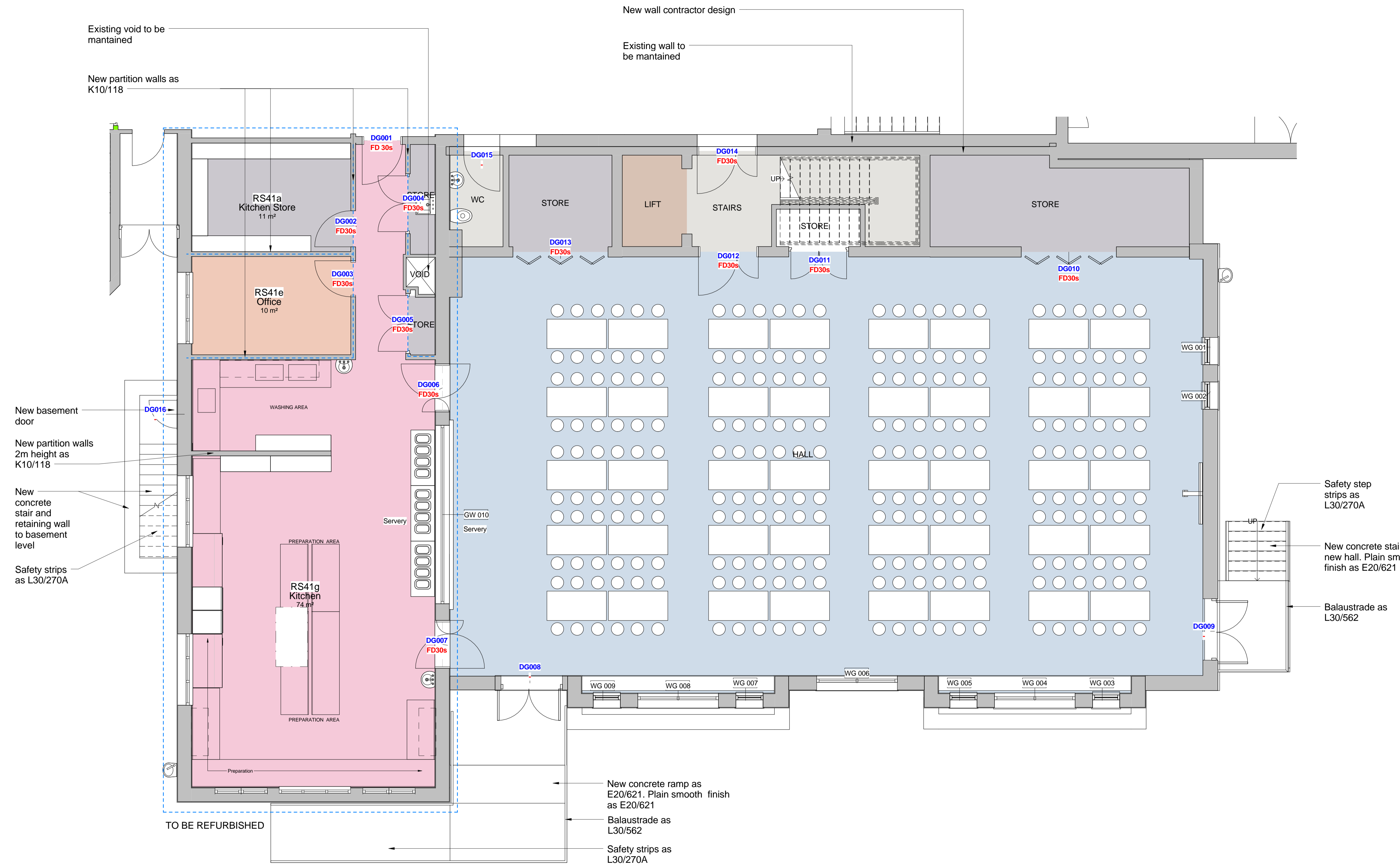


SAFETY HEALTH AND ENVIRONMENTAL (SHE) INFORMATION
 Based upon the assumption that all works will be undertaken by competent contractors working under appropriate, approved method statements, the designer would draw the user's attention to the significant residual SHE risks that have not been eliminated from the design process or the drawing by the design process.
CONSTRUCTION, OCCUPANCY AND DEMOLITION
 List below the significant residual risks for EACH of these three phases of operation.
 (These are not intended to be a substitute for a full SHE risk assessment or a detailed SHE plan for the project and should not be used as a basis for the design process.)

NOTE:
 All aluminium windows as L10/330A



1 Prop GF Layout
 AB-120 1 : 50

Rev No.	Comments	Date

Client:
 London Borough of Ealing

Project title:
 St Mark's Primary School Lower Boston Road,
 Hanwell, W7 2NR

Drawing title:
 Prop Layout GF Phase 2

Drawing status:
TENDER

Job No.: EC1099
 Project co-ordinator: JL

Scale: @A1 1 : 50
 Date: January 2016

Drawn by: IS
 Checked by: JC

Dwg No.: AB-120
 Rev No.:

