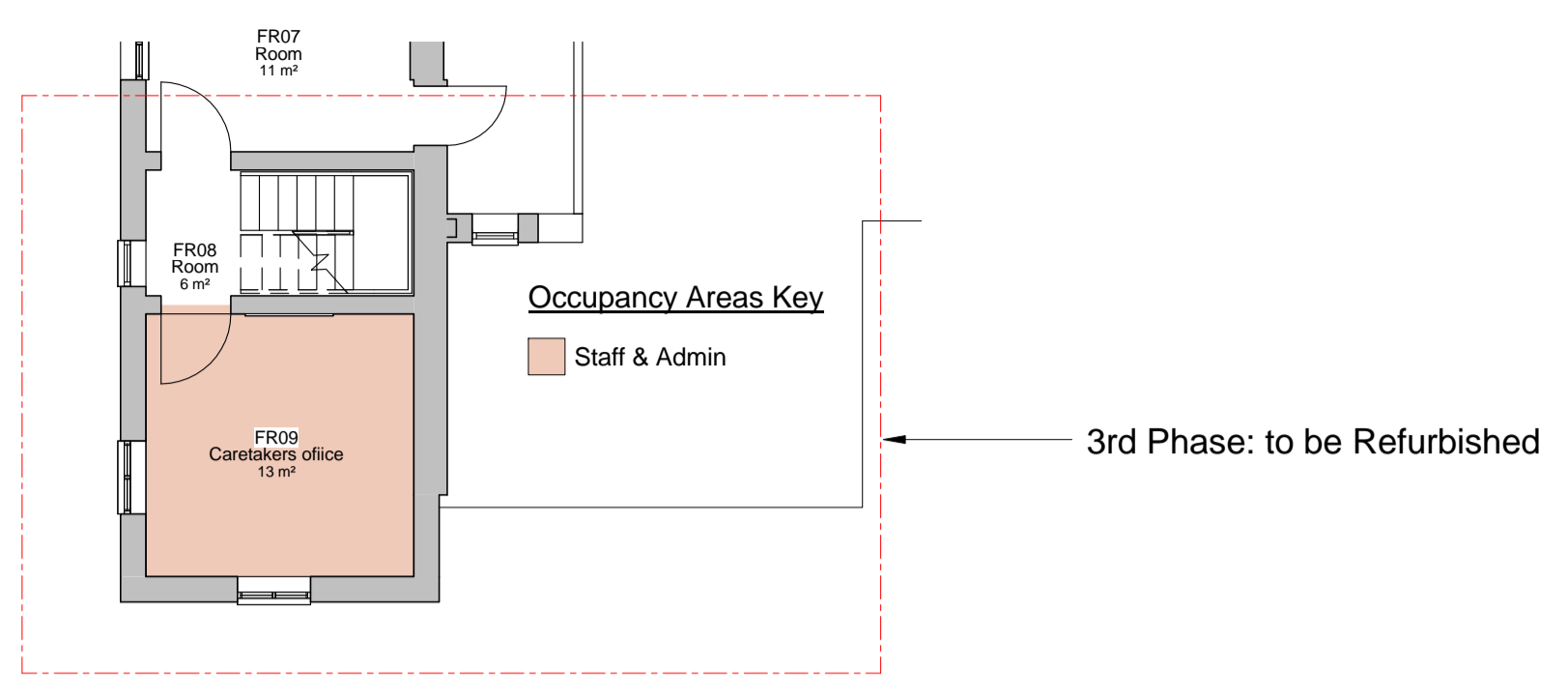
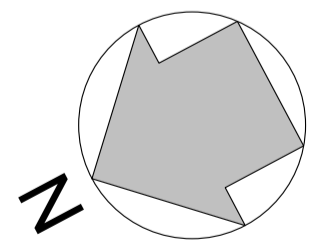
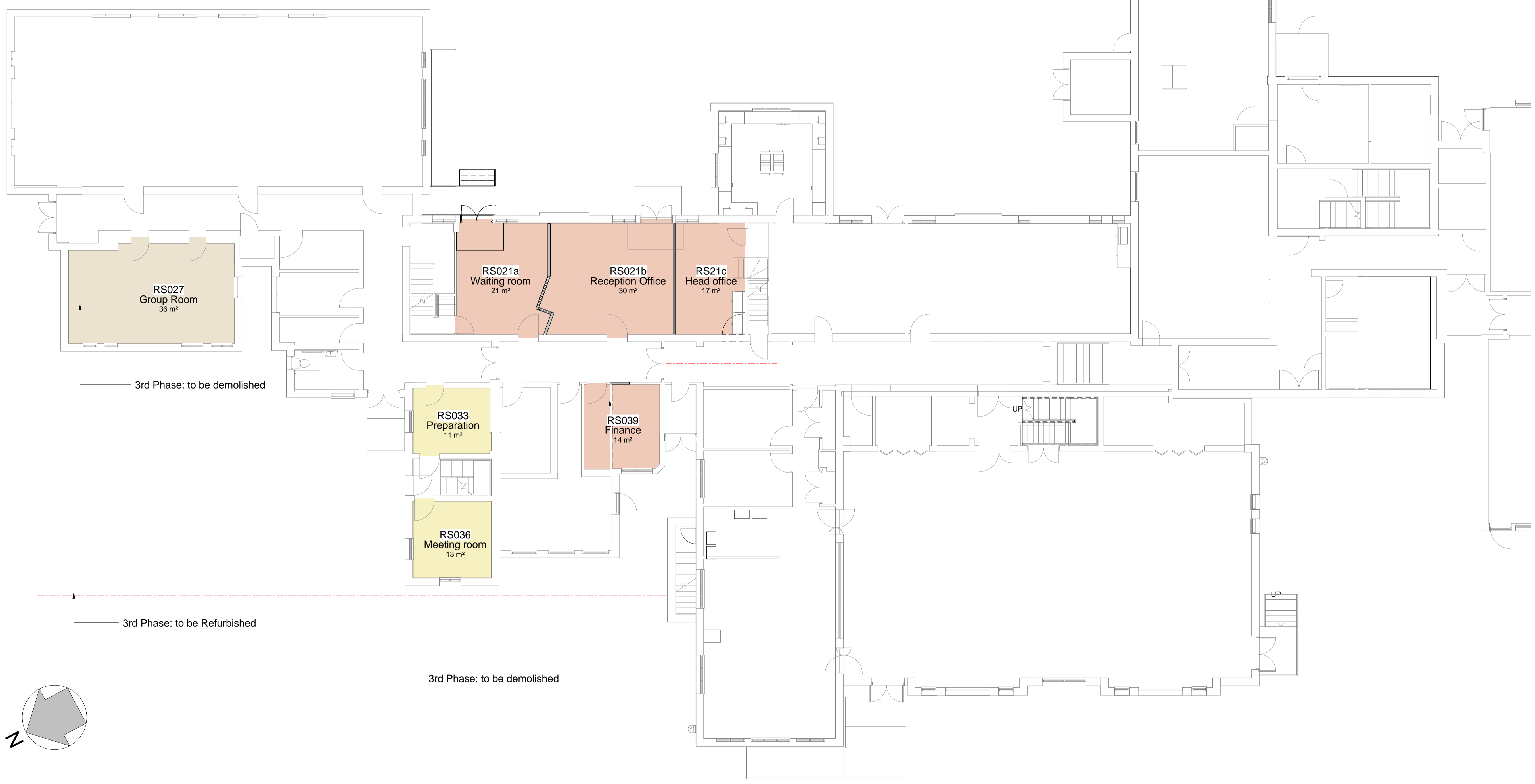


**SAFETY HEALTH AND ENVIRONMENTAL (SHE) INFORMATION**  
 Based upon the assumption that all works will be undertaken by competent contractors working under appropriate, approved method statements, the designer should draw the user's attention to the significant residual SHE risks that have not been eliminated from the design process or eliminated by the design process.  
**CONSTRUCTION OCCUPANCY AND DEMOLITION**  
 List below the significant residual risks for EACH of these three phases of operation.  
 (These are not intended to be a comprehensive list of risks but are intended to highlight key risks that the designer should be aware of.)

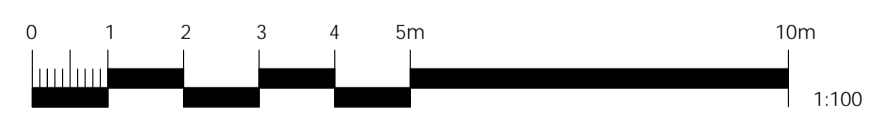


2 FRO9 First Floor Caretakers Office  
 I : 100

**Occupancy Areas Key**  
 Classroom Base  
 Learning Resource  
 Staff & Admin



1 Proposed Ground Floor/B1 Phase 3  
 I : 100



Rev No.	Comments	Date

Client:  
 London Borough of Ealing

Project title:  
 St Mark's Primary School Lower Boston Road,  
 Hanwell, W7 2NR

Drawing title:  
 Proposed GF & FF /B1 (Phase 3)

Drawing status:  
**TENDER**

Job No. EC1099	Project co-ordinator JL
Scale @A1 1 : 100	Date January 2016
Drawn by IS	Checked by JC
Dwg No. AB-104	Rev No.